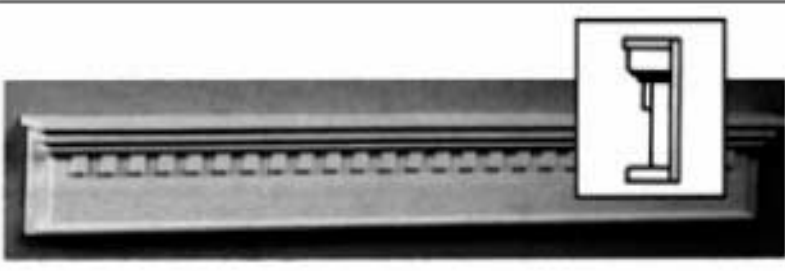




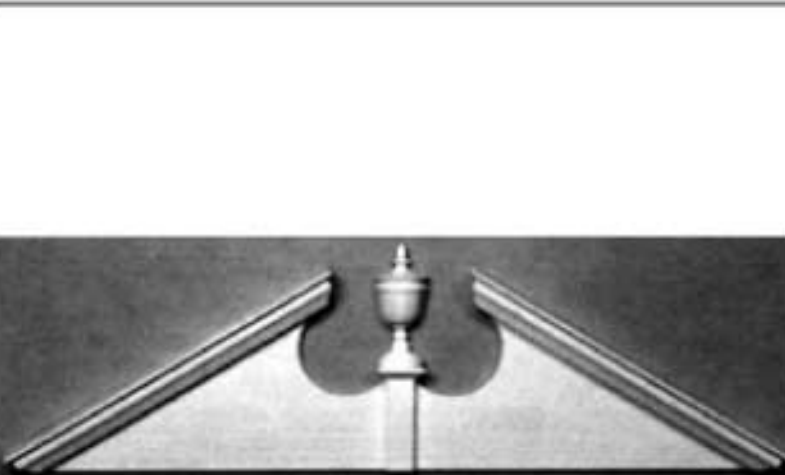
37300 Wentworth Crosshead (w/backboard)

37300	W: 55-1/2"	H: 7-5/8"	P: 3"
37301	W: 86-1/2"	H: 7-5/8"	P: 3"



37303 Maryland Crosshead (w/backboard)

37303	W: 55-1/2"	H: 7-5/8"	P: 3"
37304	W: 86-1/2"	H: 7-5/8"	P: 3"



37330 Oakhaven Pediment

37330	W: 60-1/2"	H: 19"	PROJ: 3"	PITCH: 7.5/12			
37331	W: Min: 60-1/2"	Max: 105"	H: Min: 21-1/2"	Max: 21-1/2"	PROJ: Min: 2-1/2"	Max: 2-1/2"	PITCH: 7.5/12



37332 Neoclassic Pediment

37332	W: Min: 61"	Max: 86"	H: Min: 21-1/2"	Max: 21-1/2"	PROJ: Min: 2-1/2"	Max: 2-1/2"	PITCH: 7.5/12
-------	-------------	----------	-----------------	--------------	-------------------	-------------	---------------



37310 Dickinson Sunburst

37310	W: 60-1/2"	H: 19"	PROJ: 3"	PITCH: 7.5/12
-------	------------	--------	----------	---------------

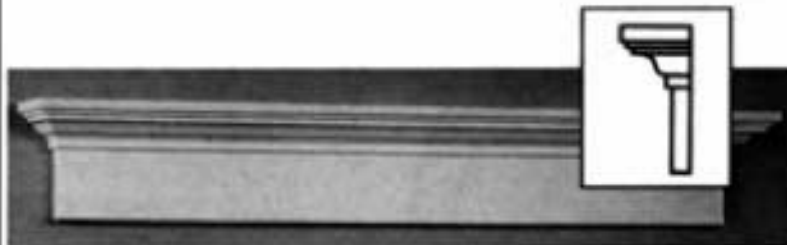


37320 Winchester Crosshead

37320	W: 55-1/2"	H: 19"	PROJ: 2"
37321	W: 86-1/2"	H: 23"	PROJ: 2"



TEL: 718-963-3890 800-963-3890
FAX: 718-384-4803
E-MAIL: info@rrdesignersworld.com



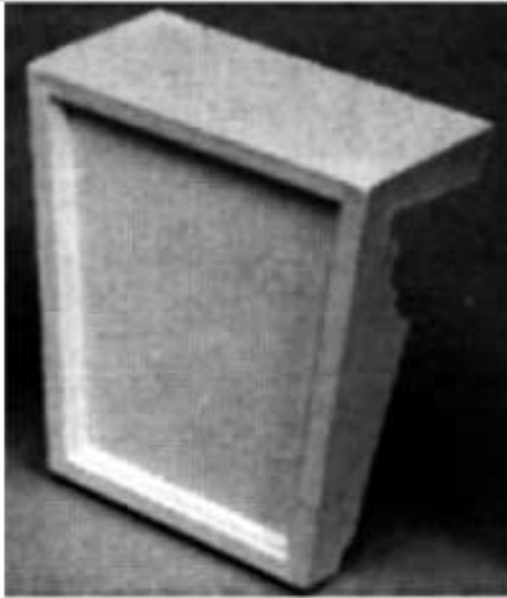
37628	W: 28"	H: 6"	P: 2-3/4"	K: 37401
37633	W: 33-5/8"	H: 6"	P: 2-3/4"	K: 37401
37636	W: 36"	H: 6"	P: 2-3/4"	K: 37401
37637	W: 37-5/8"	H: 6"	P: 2-3/4"	K: 37401
37640	W: 40"	H: 6"	P: 2-3/4"	K: 37401
37644	W: 44"	H: 6"	P: 2-3/4"	K: 37401
37648	W: 48"	H: 6"	P: 2-3/4"	K: 37401
37660	W: 60"	H: 6"	P: 2-3/4"	K: 37401
37672	W: 72"	H: 6"	P: 2-3/4"	K: 37401
37936	W: 36"	H: 9"	P: 2-3/4"	K: 39901
37940	W: 40"	H: 9"	P: 2-3/4"	K: 39901
37944	W: 44"	H: 9"	P: 2-3/4"	K: 39901
37948	W: 48"	H: 9"	P: 2-3/4"	K: 39901
37960	W: 60"	H: 9"	P: 2-3/4"	K: 39901
37972	W: 72"	H: 6"	P: 2-3/4"	K: 39901
39936	W: 36"	H: 9"	P: 4-3/8"	K: 38901
39940	W: 40"	H: 9"	P: 4-3/8"	K: 38901
39944	W: 44"	H: 9"	P: 4-3/8"	K: 38901
39948	W: 48"	H: 9"	P: 4-3/8"	K: 38901



TEL: 718-963-3890 800-963-3890
FAX: 718-384-4803
E-MAIL: info@rrdesignersworld.com

39960
W: 60" H: 6" P: 4-3/8" K: 38901

39972
W: 72" H: 9" P: 4-3/8" K: 38901



Keystone #38401

38401
W: 5-1/2", 7" (wide top)
H: 9"
Use with 37300,37301,37303,37304



Winchester Keystone

37401
W: 4-3/4", 6" (top) H: 7-1/8"

39901
W: 5", 7" (top) H: 10-1/2"



Lexington Sunburst

37361
W: 36" H: 9" P: 1-3/4"

39401
W: 40" H: 9" P: 1-3/4"

37481
W: 48" H: 12" P: 1-3/4"

37601
W: 60" H: 15" P: 1-3/4"

37721
W: 72" H: 18" P: 1-3/4"

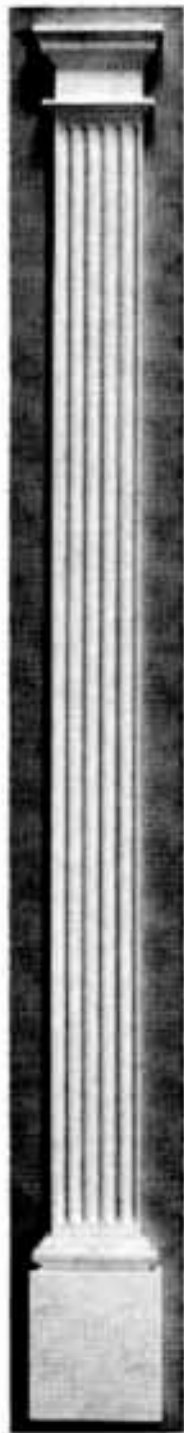
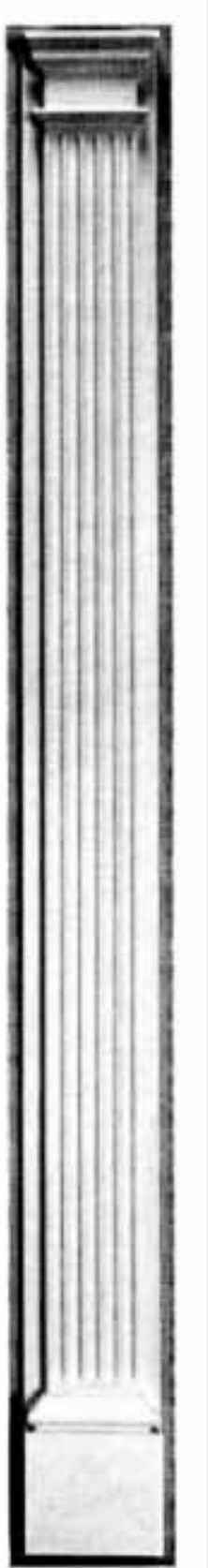
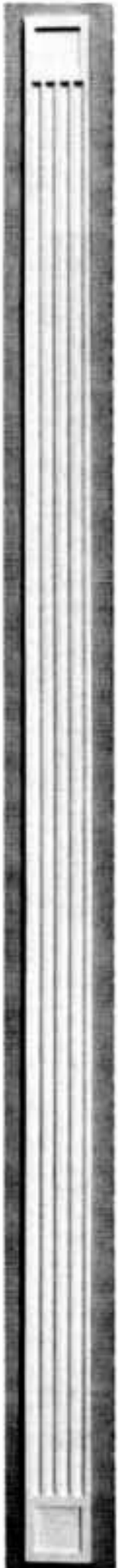


TEL: 718-963-3890 800-963-3890
FAX: 718-384-4803
E-MAIL: info@rrdesignersworld.com

Ashland Sunburst



- 38320
W: 32" H: 16" P: 1-3/4"
- 38360
W: 36" H: 18" P: 1-3/4"
- 37400
W: 40" H: 18" P: 1-3/4"
- 37480
W: 48" H: 24" P: 1-3/4"
- 37600
W: 60" H: 30" P: 1-3/4"
- 37720
W: 72" H: 36" P: 1-3/4"



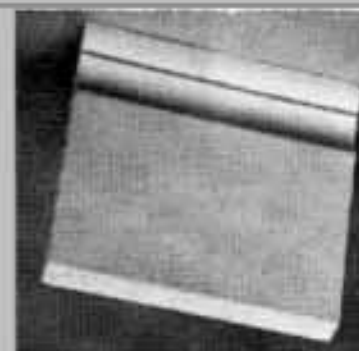
*No. 37885 Pilasters, No. 37300 Wentworth Crosshead,
No. 37330 Oakhaven Pediment*

Product Number	Projection Bottom	Projection Middle	Width Bottom	Width Middle	Length
37510	3/4"	3/4"	5"	5"	120'
37680	3"	3"	6-1/2"	6-1/2"	85"
37885	3"	3"	8"	8"	90"
37895	3"	3"	8"	8"	100"
37985	3"	3"	9"	9"	90"
37995	3"	3"	9"	9"	100"
37585	2-1/8"	3/4"	8-1/8"	5-1/2"	85"
37590	2-1/8"	3/4"	8-1/8"	5-1/2"	90"
37511	3/4"	3/4"	5"	5"	5"

Fluted Mull

Fluted Pilaster

Fluted Pilaster



- 37550 (with Backband)
- 37600
- 37885
- 37895
- 37985
- 37995

37550
37550

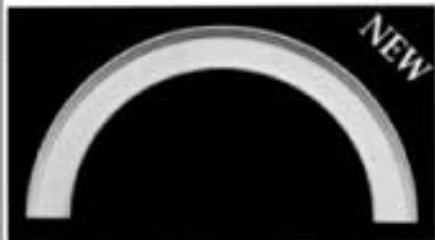
Plinth Block
37511



TEL: 718-963-3890 800-963-3890
FAX: 718-384-4803
E-MAIL: info@rrdesignersworld.com



Rider House



Mathias House



Wallace Arch (shown with 93200 Corbels)

Rider House Arch
96031, 96043, 96051

Mathias House Arch
96131, 96137, 96143, 96146,
96151, 96266, 96270, 96396

Wallace House Arch
Rider House Keystone
96238, 96250, 93100, 93105



NEW

No. 93100, 93105
Rider House Keystones

Rider House Keystone

93100, 93105

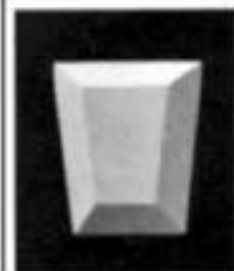


NEW

No. 93103, 93104, 93108
Grand Paces Keystones

Grand Paces Keystone

93103, 93104, 93108



NEW

No. 93101, 93106
Longleaf Keystones

Longleaf Keystone

93101, 93106



NEW

No. 93102, 93107
Fleur-de-Lis Keystones

Fleur-de-Lis Keystone

93102, 93107



TEL: 718-963-3890 800-963-3890
FAX: 718-384-4803
E-MAIL: info@rrdesignersworld.com